



Update languages **(valid from V7.1.1246)**

From now on you have 2 possibilities to import/update the languages in EuroFib for Windows.

Please notice, that the following information is only relevant for licenses which use other languages than "German". If you only use "German" your language will be imported/updated during the installation process of an EuroFib update as it was before.

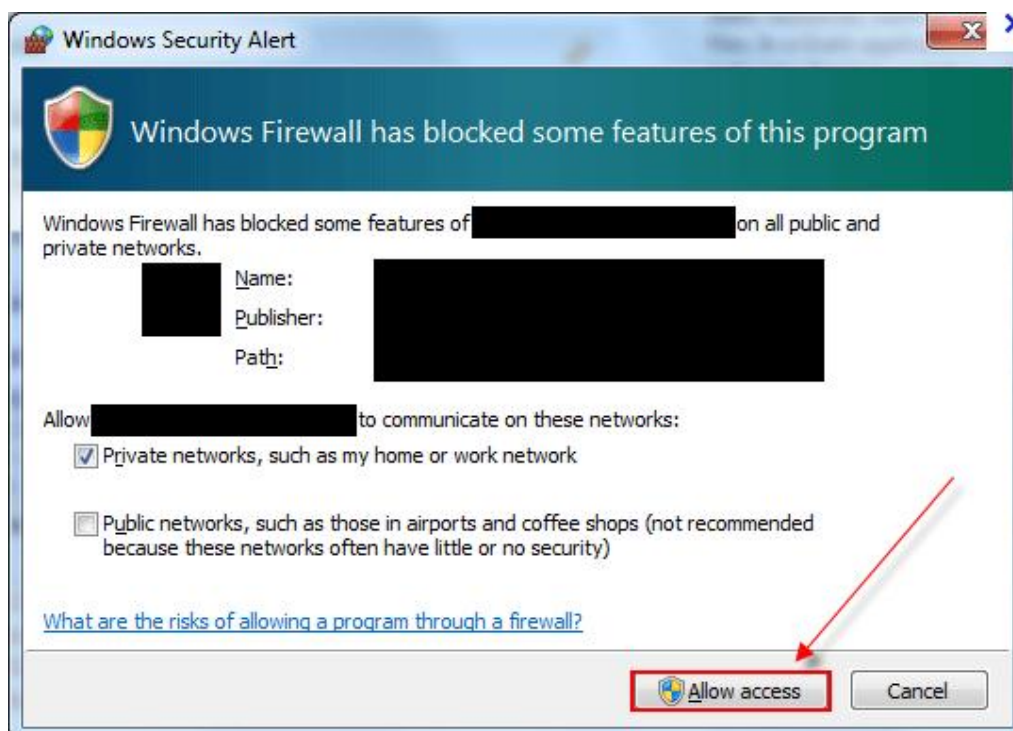
- **Automatic update of languages**

After the installation of an EuroFib for Windows update, the application will check and compare all available languages during the database update through an FTP-server connection. If there is a newer language available for your license, it will be downloaded and imported automatically.

Technical requirements (FTP: 77.75.19.66):

If you see such a message (below) after the installation of an EuroFib update, the application tries to connect to our FTP-server to obtain the language informations. The Windows firewall blocks this connection per default – with a click on the button "Allow access" you are able to allow EuroFib this connection.

You are also able to allow this access previously if you configure your Windows firewall. Contact your IT-administrator for details.

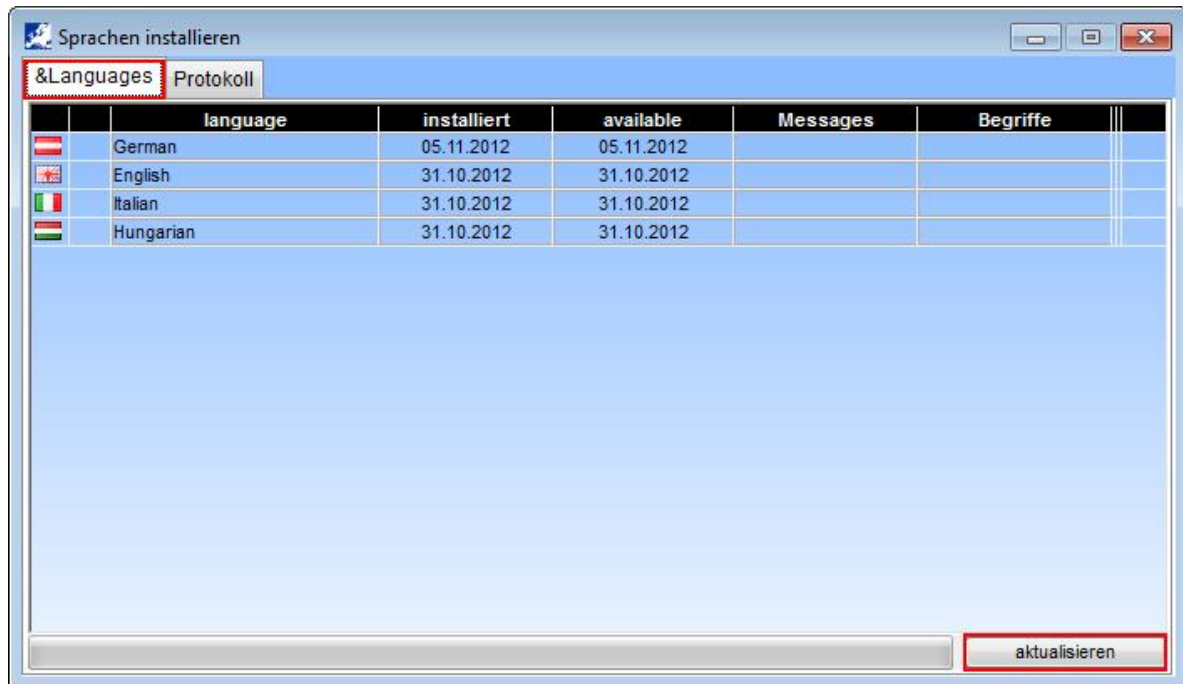




- **Manual update of languages**

Help => Update languages

Here you are able to compare/update your languages manually at any time.



Advice:

EuroFib checks all language files from our FTP-server and the language files from the program folder of EuroFib. That means you are also able to use the “old” type (download the language from www.schmidhuber.com and copy the files to the program folder)

Additional you get all informations about the import/installation process on tabpage “protocol”.

