



EuroFib for Windows version 7

Index

General informations	2
FAQ	2
What does it mean?	2
How can i check the version of my EuroFib for Windows financial accounting?	2
Do i have to change immediately from version 6 to version 7?	3
What benefits do i have by change from version 6 to version 7?	3
What do i have to check?.....	3
What does it cost to change from version 6 to version 7?.....	3
How can i change from version 6 to version 7?.....	3
New features in version 7	4
Save/load screen.....	4
Navigation menu	5
Export WYSIWYG	6
Copy values automatically (from/to).....	6
Compatibility + technic	6



General informations

New features in our financial accounting software EuroFib for Windows will be developed in version 7 only with end of February 2011. So we want to convert all our customers the next months.

FAQ

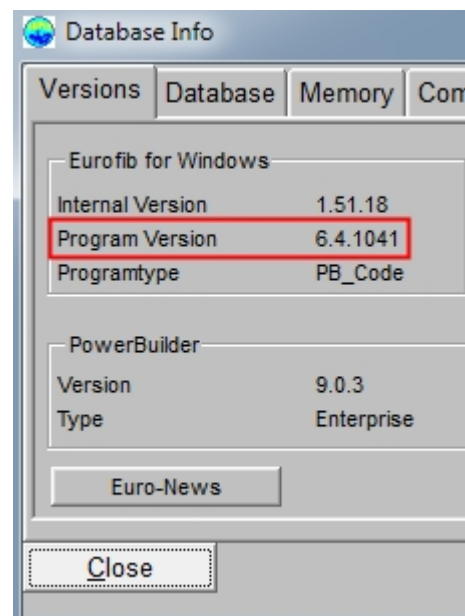
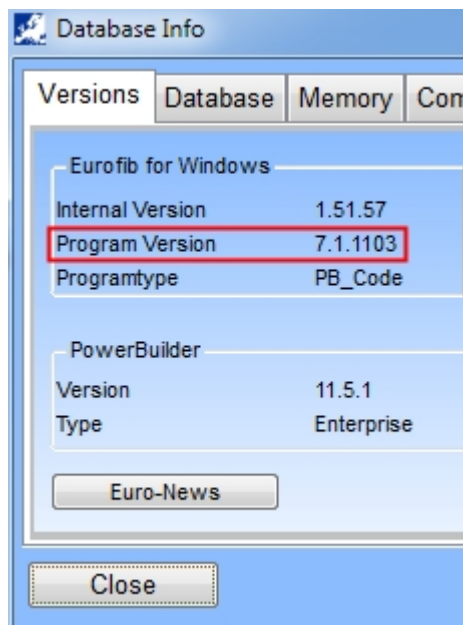
What does it mean?

We won't provide any updates for EuroFib for Windows version 6 anymore in the future. The last update will still be available on our website <http://www.schmidhuber.com> in the download area.

If there are any critical errors in this version, we will resolve them of course. So we can guarantee a stable and error free version 6 (also after February 2011).

How can i check the version of my EuroFib for Windows financial accounting?

You can check your currently installed EuroFib for Windows version under „Help => Version“.



Version 6: Version 6.4.XXXX
Version 7: Version 7.1.XXXX



Do i have to change immediately from version 6 to version 7?

No, you don't have to change immediately. If you are satisfied with the functionality of the current version 6, you can use it without any problems.

But we would like to point out, that maybe it's necessary to change from version 6 to version 7 at a later time because of technical reasons (new operating systems etc.) For example if you get a new PC in the future.

What benefits do i have by change from version 6 to version 7?

You will get regular updates for version 7 (as it was for version 6) with new developments and legal changes. Additional the technical compatibility in the future is guaranteed.

You can see a detailed list of the already existing new functionality under point „New features in version 7“.

What do i have to check?

For version 7 you have to fulfill the system requirements.

You can see the system requirements on our website <http://www.schmidhuber.com>

(Products => Financial accounting => System prerequisites)

What does it cost to change from version 6 to version 7?

The change is free of charge for our customers with a valid maintenance contract!

Excluded are services like e.g. an installation on site or a desired data conversion.

How can i change from version 6 to version 7?

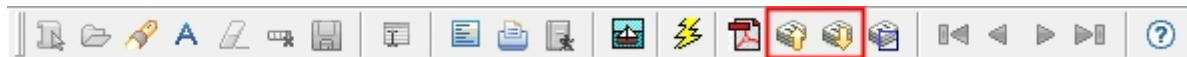
Simply send an e-mail to support@schmidhuber.com or contact us directly via phone under +43 (1) 270 05 31



New features in version 7

Save/load screen

The windows of our reports are always empty at the beginning. Sometimes you need the same settings for one report every time. That was the reason for developing this functionality.



Now you have the possibility to define your personal settings and save them. You can set the previous defined settings as default to load them every time you start the report or you can load them at the push of a button. You can share your settings for all users/clients/accounting years also.

standard	name	erstellt von	all users	all clients	alle Jahre
<input checked="" type="checkbox"/>	Liability report	SUP	<input checked="" type="checkbox"/>	<input checked="" type="checkbox"/>	<input checked="" type="checkbox"/>
<input type="checkbox"/>	Real accounts	SUP	<input type="checkbox"/>	<input type="checkbox"/>	<input type="checkbox"/>

Name:

Standard: ☐

Zugriff erlaubt:

- Alle User ☐
- Alle Klienten ☐
- Alle Buchungsjahre ☐

Buttons: , ,

standard	name	erstellt von	all users	all clients	alle Jahre
<input checked="" type="checkbox"/>	Liability report	SUP	<input checked="" type="checkbox"/>	<input checked="" type="checkbox"/>	<input checked="" type="checkbox"/>
<input type="checkbox"/>	Real accounts	SUP	<input type="checkbox"/>	<input type="checkbox"/>	<input type="checkbox"/>



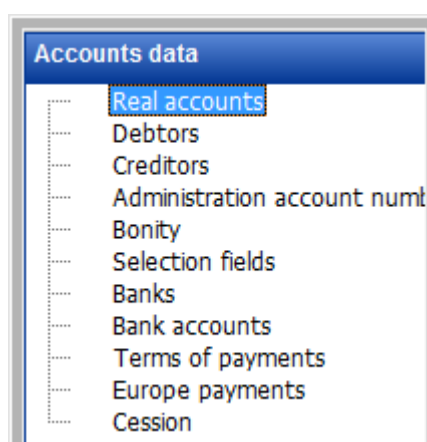
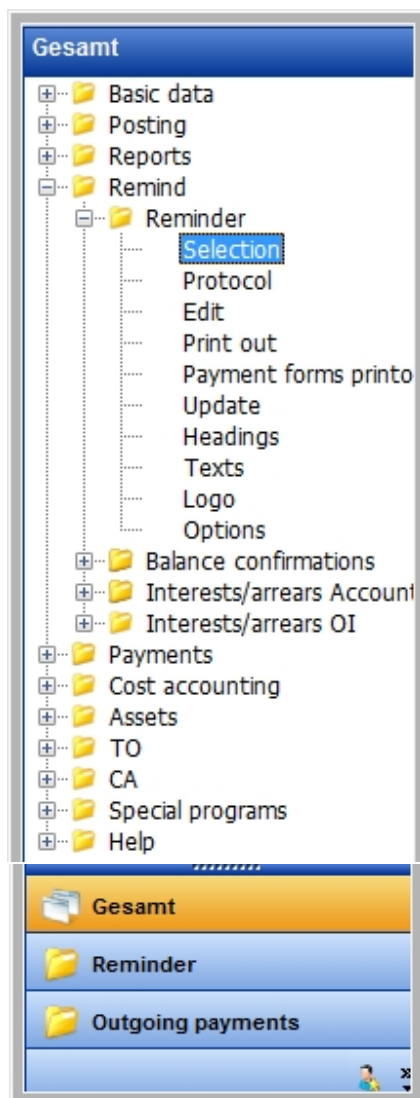
Navigation menu

The navigation menu shows the whole EuroFib for Windows menu in a tree structure on the left side of the screen. With this menu you can navigate through the single menus faster and more comfortable.

Additional you can save complete menu items as „favourite“ with a click on the right mouse button. (screenshot „Accounts data“)

You can create single programs as „favourite buttons“ with own icons too.

You can activate and configure this navigation menu for each user under „Special programs => My Settings“.

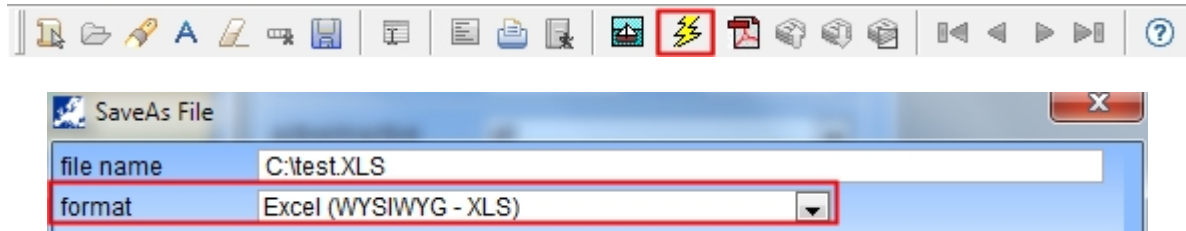


For sure you have several possibilities to configure your navigation menu as you like (e.g. Show/hide, change order, rename, ...)

Alle Schaltflächen anzeigen
Weitere Schaltflächen anzeigen
Weniger Schaltflächen anzeigen
Keine Schaltflächen anzeigen
Navigationsbereichsoptionen...
Schaltflächen hinzufügen oder entfernen ►
Navigationsbereich beenden

Export WYSIWYG

What you see is what you get – this new format exports the data to MS-Excel exactly in the format as you will get it on a print out.



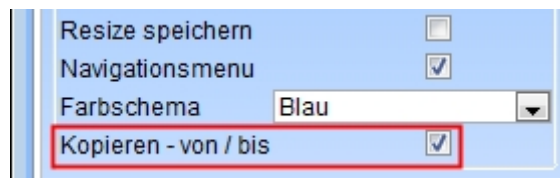
That means, you will get all headlines and sums in the file and it's already formatted.

[illegible]

Additional to the new version the „normal“ export is available too.

Copy values automatically (from/to)

With our new „copy from/to“ functionality the values you enter in a “from” field will be copied to the corresponding “to” field automatically in the whole application.



Compatibility + technic

- Better support of 64bit operating systems
- Support of Microsoft Windows Server 2008
- Support of UNICODE-databases
- Support of Microsoft Office 2007/2010
- Direct PDF-export under Microsoft Windows Vista, Windows 7